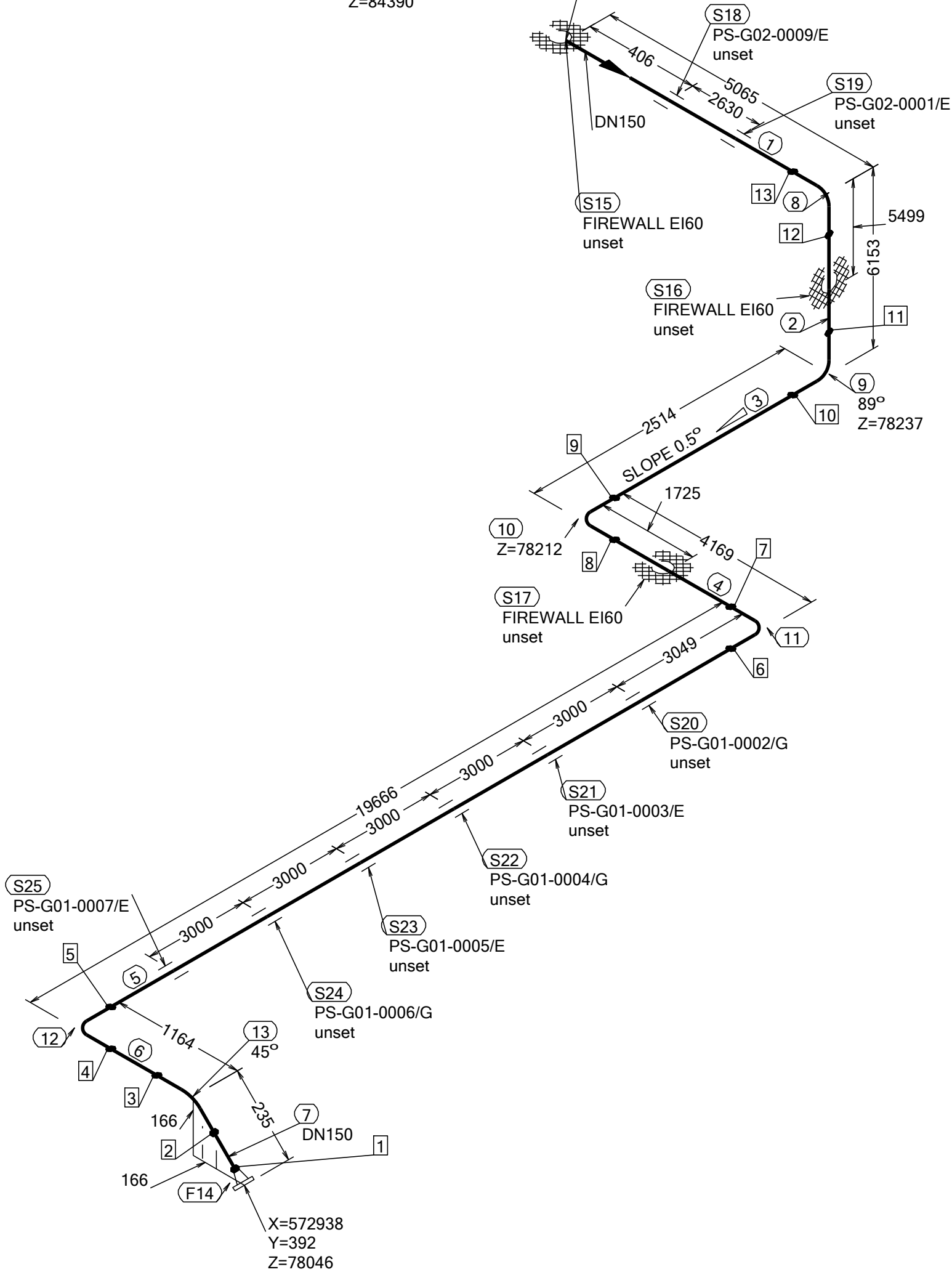


N (Y)

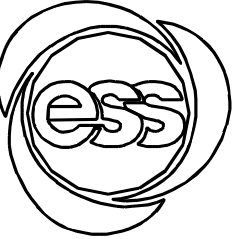
CONT. ON
DRAWING: ESS-XXXXX18
X=595118
Y=10956
Z=84390



WELD	WPS	FABRICATION MATERIALS					
1		PT	COMPONENT DESCRIPTION	DN	MATERIAL	QTY (mm)	REMARKS
2							
3							
4							
5							
6							
7							
8							
9							
10							
11							
12							
13							
<u>PIPE</u>							
1		PIPE, SS-EN 10217-7, TC1, 168.3x2.0	150	EN 1.4404	4836		
2		PIPE, SS-EN 10217-7, TC1, 168.3x2.0	150	EN 1.4404	5697		
3		PIPE, SS-EN 10217-7, TC1, 168.3x2.0	150	EN 1.4404	2058		
4		PIPE, SS-EN 10217-7, TC1, 168.3x2.0	150	EN 1.4404	3711		
5		PIPE, SS-EN 10217-7, TC1, 168.3x2.0	150	EN 1.4404	19208		
6		PIPE, SS-EN 10217-7, TC1, 168.3x2.0	150	EN 1.4404	840		
7		PIPE, SS-EN 10217-7, TC1, 168.3x2.0	150	EN 1.4404	85		
<u>FITTINGS</u>							
8		ELBOW 90, TYPE 3D, SS-EN 10253-4, TYPE A, 168.3x2.0	150	EN 1.4404	1		
9		ELBOW 90, TYPE 3D, SS-EN 10253-4, TYPE A, 168.3x2.0	150	EN 1.4404	1		
10		ELBOW 90, TYPE 3D, SS-EN 10253-4, TYPE A, 168.3x2.0	150	EN 1.4404	1		
11		ELBOW 90, TYPE 3D, SS-EN 10253-4, TYPE A, 168.3x2.0	150	EN 1.4404	1		
12		ELBOW 90, TYPE 3D, SS-EN 10253-4, TYPE A, 168.3x2.0	150	EN 1.4404	1		
13		ELBOW 45, TYPE 3D, SS-EN 10253-4, TYPE A, 168.3x2.0	150	EN 1.4404	1		
<u>FLANGES</u>							
14		FLANGE WN, SS-EN 1092-1, TYPE 11, PN16	150		1		

ERECTION MATERIALS

PT	COMPONENT DESCRIPTION	DN	MATERIAL	QTY	REMARKS
NO				(mm)	
SUPPORTS					
15	PENETRATION ATTA	150		1	
16	PENETRATION ATTA	150		1	
17	PENETRATION ATTA	150		1	
18	ESS Atta	150		1	
19	ESS Atta	150		1	
20	ESS Atta	150		1	
21	ESS Atta	150		1	
22	ESS Atta	150		1	
23	ESS Atta	150		1	
24	ESS Atta	150		1	
25	ESS Atta	150		1	

WPS See Weldlist	Design Temperature	Tightening Torque For Flange Joints	P&ID Drawing Number	General Layout Drawing Number	Calculation Report	Inspection Plan	Area Code
TBN	50degC	TBN	ESS-0060416	TBN	ESS-0058702	TBN	G01-NCL
Quality Level For Weldign Acc To	Design Pressure	Bend Radius	Bending Procedure	Coupling Installation Procedure	Pressure Test Program	Alternate System Tag	Date (First Issue)
TBN	10bar (g)	N/A	N/A	TBN	TBN		170522
Weld Joint Efficiency Factor (Longitudinal)	Test Pressure	Insulation Specification			Title/Name EUROPEAN SPALLATION SOURCE ERIC WATER COOLING SYSTEM CWM DIW SUPPLY FOR FEB ESS.ACC.E02.E04.WP0003		Scale
1,0	14.3bar (g)	N/A					-
Elevation (z) Acc To	Quality Class	Insulation Thickness					Format
BCS	MQC4-C	N/A					A2
	Media	Allowance For Corrosion			Document Number ESS-XXXXX44		Sheet
	CWM	0					1 of 1
	Pipe Specification	Surface Treatment					Revision
	MQC4-W-PN16	N/A					A1

Rev	Description	Date	Drawn	Designed	Reviewed	Verified	Quality	Approved
A1	ISSUED FOR CDR	170522	FRPE	FRPE	AKCO	ANLU		